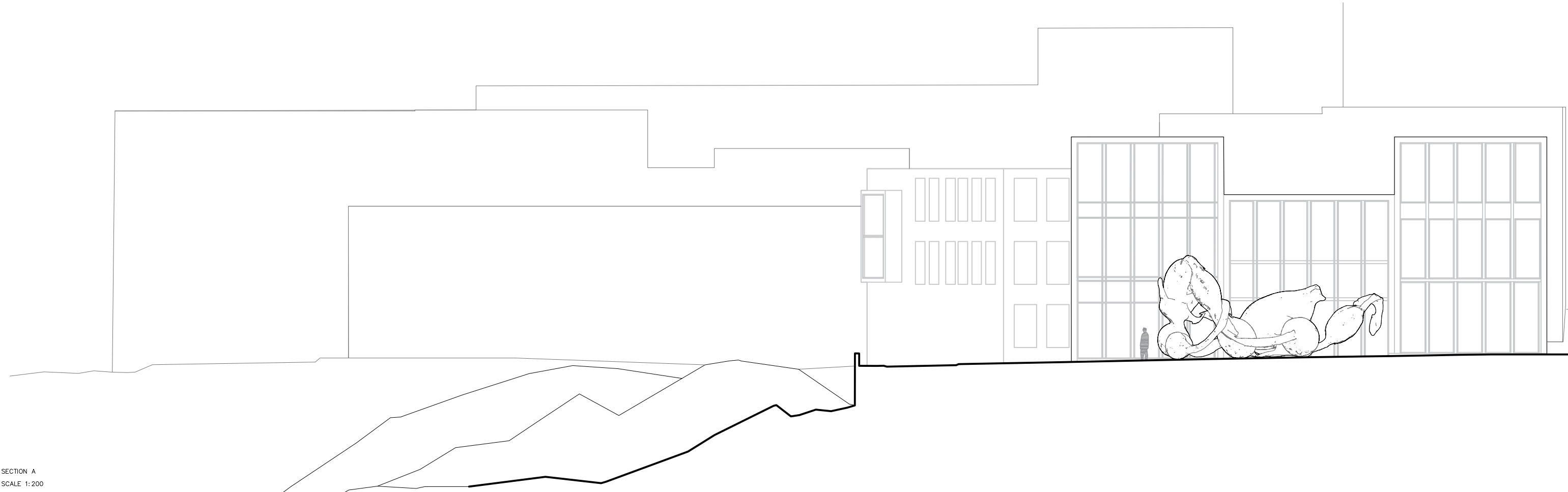
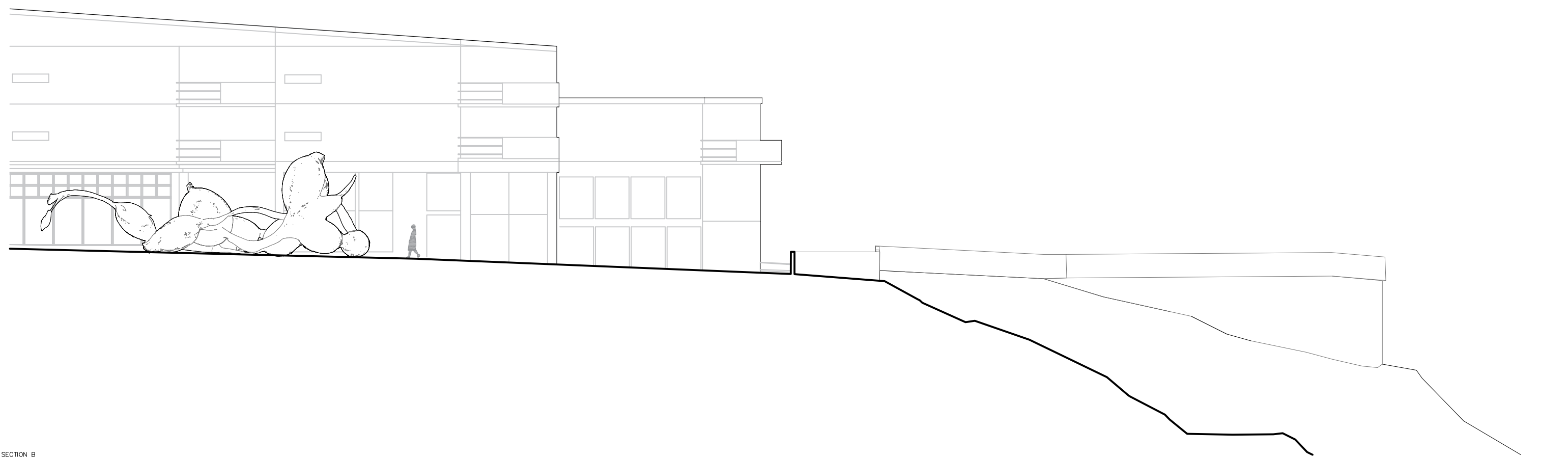


KEY PLAN  
SCALE 1:500



SECTION A  
SCALE 1:200



SECTION B  
SCALE 1:200

# 714

WRITTEN EXPOSITION

***Working title: Striped Egg Wrack / Röndóttur klóþang***

*Idea behind the work*

To enlarge one small specimen of egg wrack seaweed (*is. klóþang*) found during a walk on the shoreline of the Vogabyggð area and kept in a box as a precious fragment of nature. The final sculpture is a playful landmark with an abstract but rich metaphoric shape that enables people of all ages and background to relate to it in one way or another. The stripes on the surface make the perception of the shape more complex and create a diversified experience when one moves around and through it.

*Placement and site*

On P1, the main square. Alternatively the piece could be installed on P2 or 3, the idea being that the stripes on the sculpture can be the “theme” of the “thematic” area.

*Materials used*

Painted bronze or painted aluminum, depending on what an engineer says about the static properties of the sculpture. Bronze is more resistant than aluminium, but also more expensive. The sculpture is anchored with stainless steel bolts in concrete foundations.

*General production cost*

- a) casting in bronze 700.000 Euros
- b) casting in aluminum 550.000 Euros

*Construction and execution*

The carefully selected seaweed fragment is enlarged into a full scale model using a sliced 3d scan of the original specimen as suggested by the 1:25 model accompanying the proposal. This is carried out in styrofoam, iron support and a worked plaster surface. Once the full scale model is completed it is partitioned and sand cast in bronze (or aluminum) or as an alternative. The casts are made and painted in Germany before being transported to Iceland in trailers with CLDN/Smyril Line.